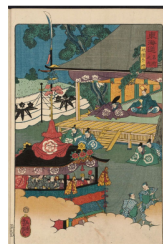


Stylistic Multi-Task Analysis of Ukiyo-e Woodblock Prints

Selina Khan
sjkhan@uva.nl
Nanne van Noord
n.j.e.vannoord@uva.nl

Informatics Institute
University of Amsterdam
Amsterdam, NL

Appendix A



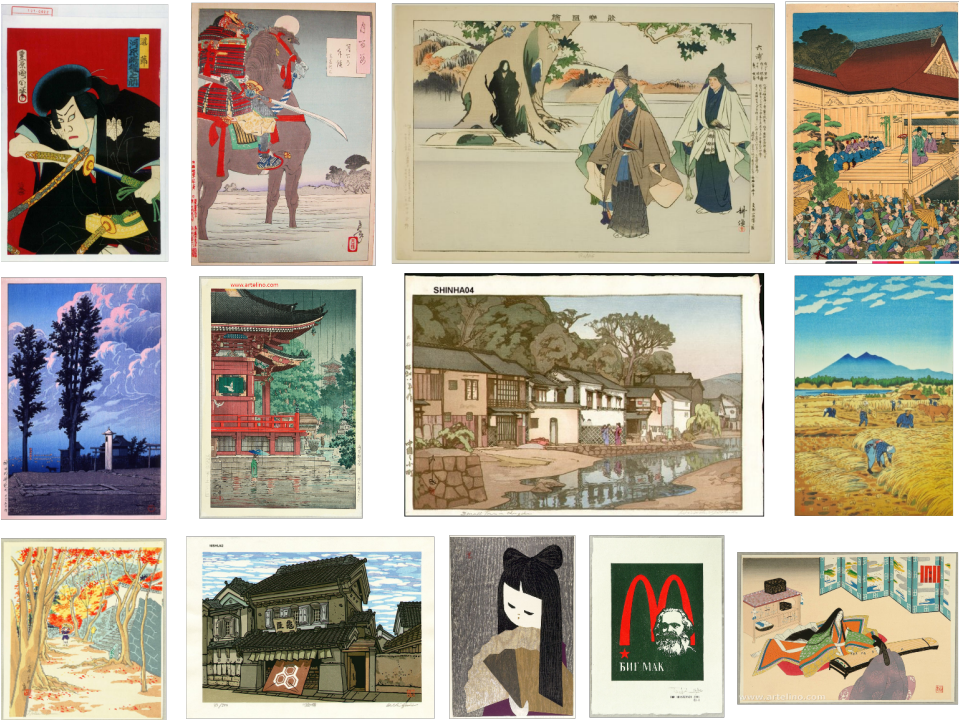


Figure 1: Example images from the Ukiyo-e dataset. Each row contains images from one era, ranging from the early ages of *Ukiyo-e* printing (top) to the modern and contemporary age. (bottom)

Appendix B



Figure 2: Original artwork by Tsuchiya Koitsu, who was famous for his landscape art. Misclassified as Kono Bairei, who was famous for his artworks depicting birds and flowers.



Figure 3: Original artwork by Torii Kiyomasu. Misclassified as Torii Kiyonobu. Kiyomasu may have been Kiyonobu's brother, or they may have even been the same man.